

# Appendix to Protos 3 Software Installation Quick Guide

1

Please note SQL Server 2012 requires Windows Vista Service Pack 2, or a higher operating system (Windows 7, Windows 8 etc) to run.

2

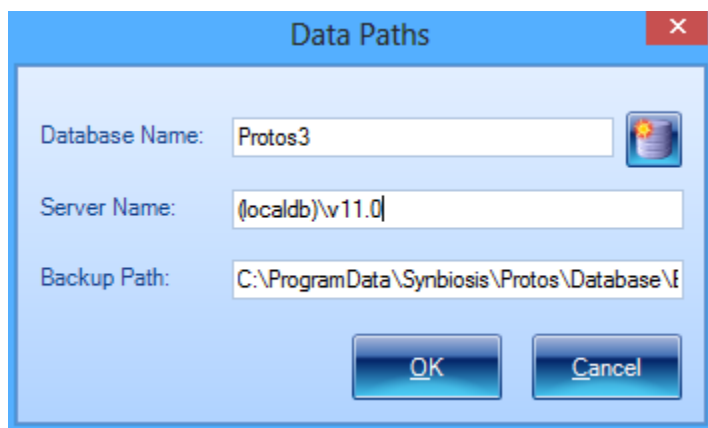
It is possible to install either Microsoft SQL Server Express or Microsoft SQL Express LocalDB or both. SQL Express LocalDB has much of the functionality of SQL Server Express but without the complex permissions and overheads.

3

When SQL Express LocalDB is installed with the installation set supplied by Synbioisis, the server name is (localdb)\v11.0 and the database name is Protos3. During the installation some elements of SQL Server Express are installed as they are required for connection of the Protos3 software to the database. If SQL Express LocalDB has been pre-installed as a standalone installation, then the user will still need to install SQL Server Management Studio.

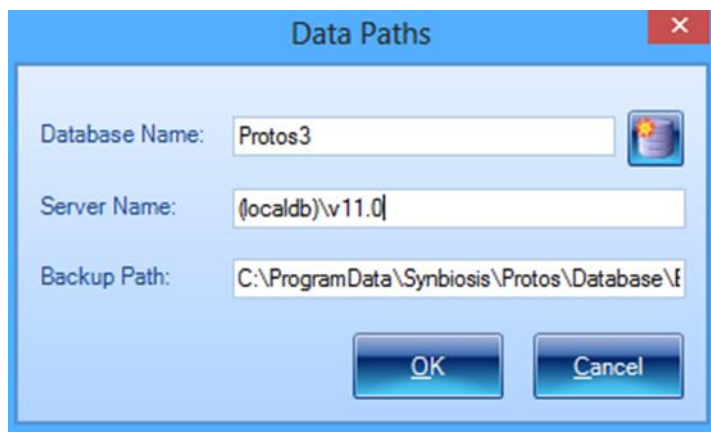
4

SQL Express LocalDB is designed for a single PC user. A single user should log onto the PC and then all users can log onto Protos3. **If more than one user is going to log onto Windows on the PC running Protos3 software you should install SQL Server Express.**



5

If a user wishes to create their own, unshared database they can log onto the PC with their own details and then in Protos3 connect to SQL Express LocalDB using the server name "(localdb)\v11.0" as below:



6

If a user is currently using SQL Server Express they can install and use SQL Server LocalDB by running the SetUpSQLServer.exe file, in the Support/Database directory, and selecting LocalDB during the installation.

## 7 Adding users to SQL Server

The following steps need to be carried out when logged in as Administrator.

When Protos3 is installed, a default users groups is created called Protos Users. Every user needs to be a member of this group.

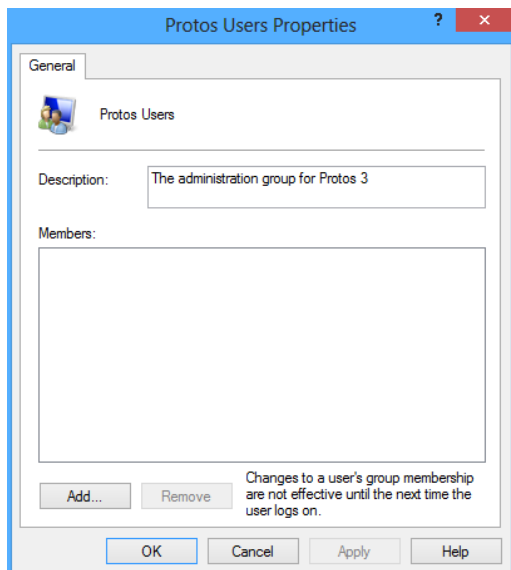
Name	Description
Access Control Assist...	Members of this group can remotely query ...
Administrators	Administrators have complete and unrestrict...
Backup Operators	Backup Operators can override security restr...
Cryptographic Operat...	Members are authorized to perform cryptog...
Distributed COM Users	Members are allowed to launch, activate an...
Event Log Readers	Members of this group can read event logs ...
Guests	Guests have the same access as members of...
Hyper-V Administrators	Members of this group have complete and ...
IIS_IUSRS	Built-in group used by Internet Information ...
Network Configuratio...	Members in this group can have some admi...
Performance Log Users	Members of this group may schedule loggi...
Performance Monitor ...	Members of this group can access performa...
Power Users	Power Users are included for backwards co...
Remote Desktop Users	Members in this group are granted the right...
Remote Management...	Members of this group can access WMI res...
Replicator	Supports file replication in a domain
Users	Users are prevented from making accidental...
Protos Users	The administration group for Protos 3
SQLServer2005SQLBro...	Members in the group have the required ac...
SQLServerMSSQLServ...	Members in the group have the required ac...
SQLServerMSSQLUser...	Members in the group have the required ac...
SQLServerSQLAgentU...	Members in the group have the required ac...
WinRMRemoteWMIU...	Members of this group can access WMI res...

➔ From the Windows Control Panel select Administrative Tools then Computer Management

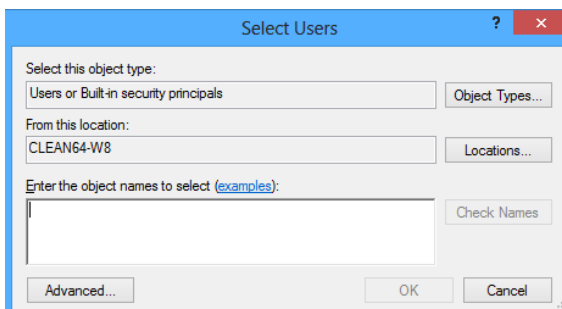
➔ Expand (+) local users and groups then click on Groups

➔ Right click on Protos Users

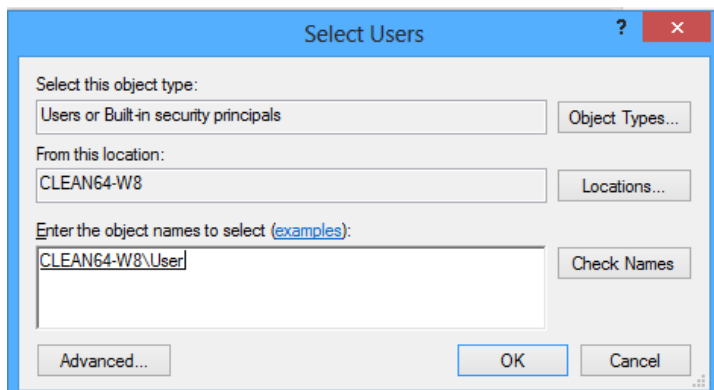
➔ Click Add to Group to add users



➔ Click Add



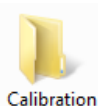
➔ To add a single user add their windows log in name and click Check Names



➔ Click Check Names

➔ Close Computer Management window

## 8 Run configuration Installation



➔ Open the Calibration folder



➔ Double click on SetupCalibration

➔ Follow the on screen instructions

## 9 Run Protos 3 software

➔ Log on to the software and ensure the lights cycle Red, Blue and Green. Click on the image tab and select live image to ensure the Camera produces a live image.

**Protos 3 is now ready to be used**

CONTACT SYNBIOSIS:  
EUROPE:  
Tel: +44 (0)1223 727125  
Email: support@synbiosis.com

USA:  
Tel: 800 686 4451/301 662 2863  
Email: support@synbiosis.com

[www.synbiosis.com](http://www.synbiosis.com)  
P3si1115